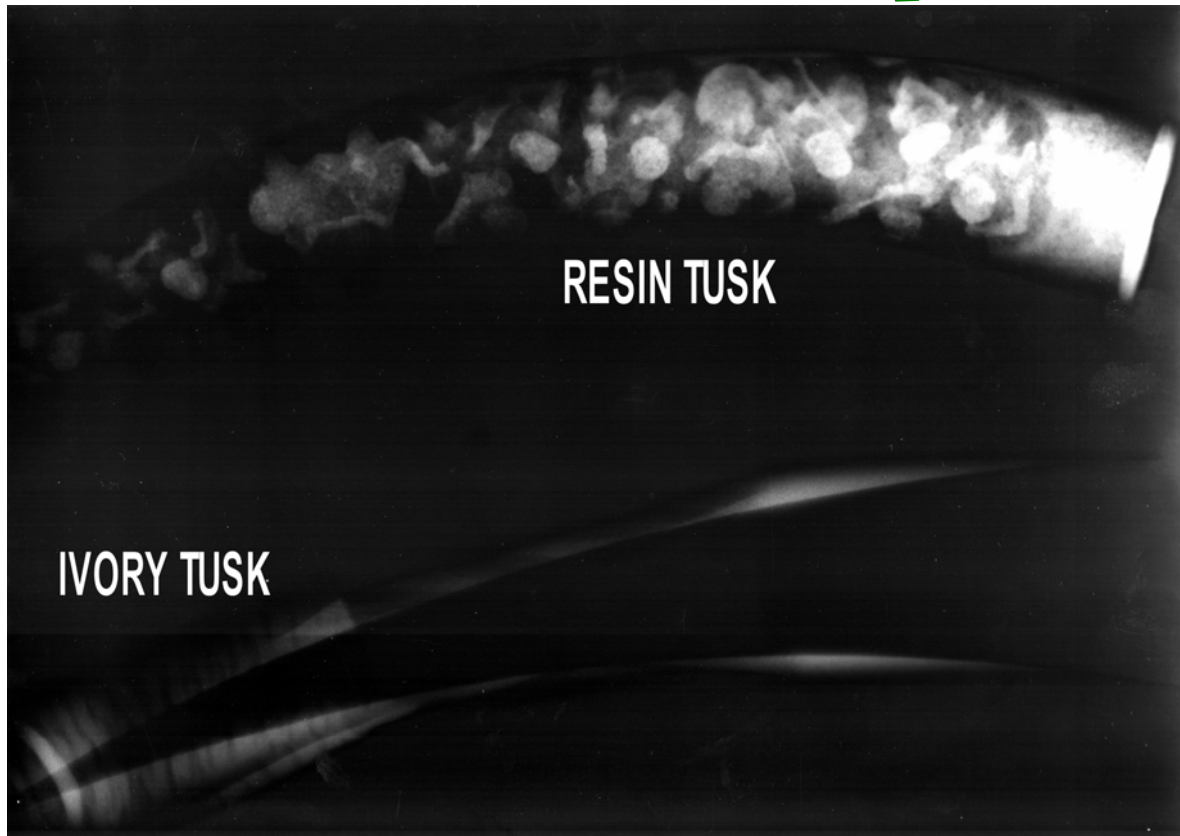


# CITES news - Prague airport



## Czech Environmental Inspectorate



29.10.2006 – Czech citizen coming back from China had Traditional Chinese Medicine (TCM) containing extract of musk deer glands (*Moschus sp.*, CITES II/B) and carved tusk, which looked like elephant tusk. We had used X-Rays and recognized, that this tusk was made from resin. TCM was confiscated and resin tusk returned to the owner, which will be fined.

More information:

**CITES team**  
Department of Protected Species and CITES  
Czech Environmental Inspectorate  
Na Brehu 267, 190 00 Prague 9

tel.: 00420 222860308-311  
fax: 00420 222860227  
[cites@cizp.cz](mailto:cites@cizp.cz)  
CZECH REPUBLIC