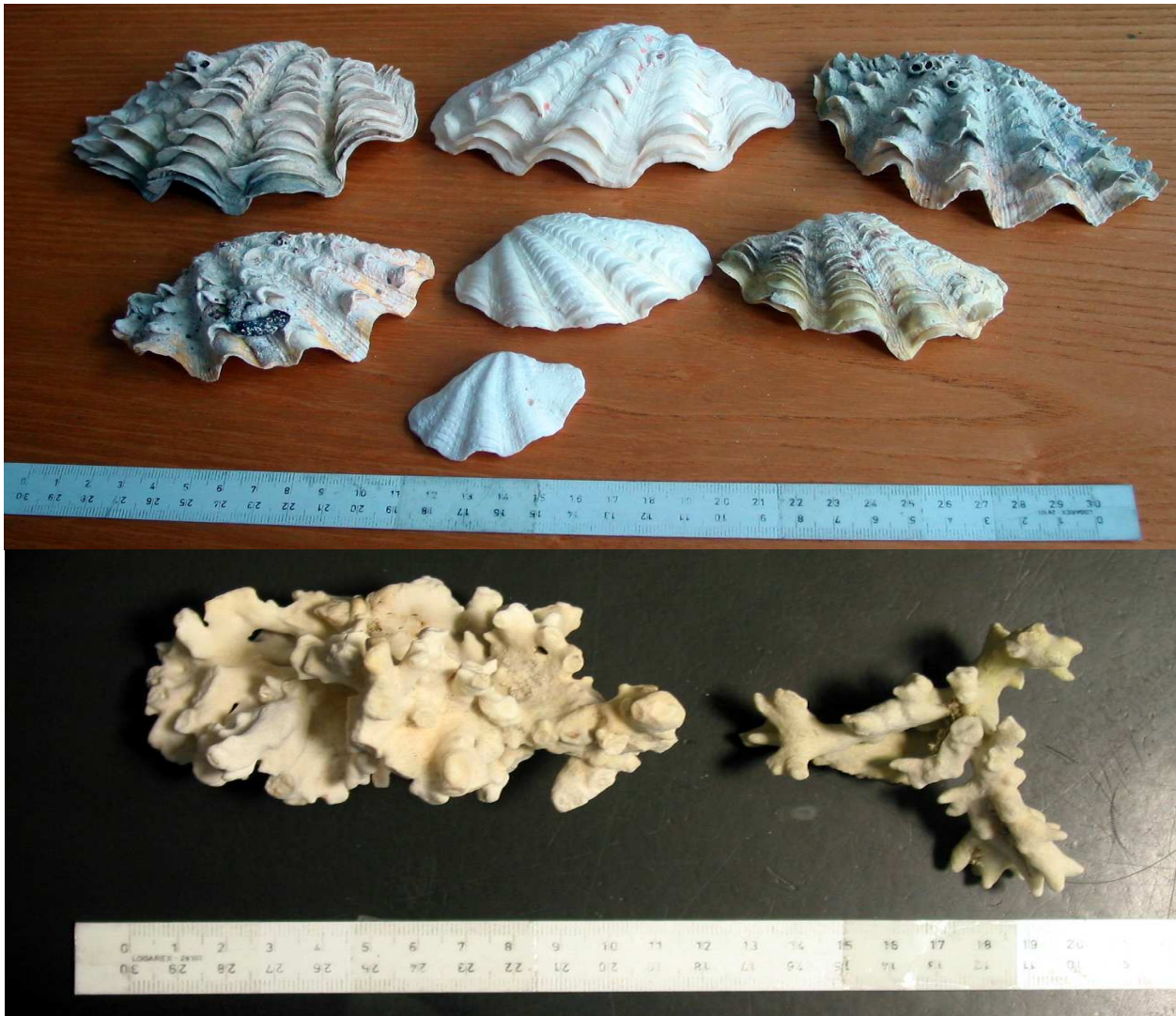


# CITES news - Prague airport



## Czech Environmental Inspectorate



2007 – Number of illegally imported corals (Scleractinia, CITES II/B) and seashells (*Tridacna* spp. CITES II/B) is growing. From the beginning of the year 2007 CEI have seized 131 specimens of this kind. Tourists bring them home from their vacation as souvenirs, but without permits. These illegally imported specimens are seized by CEI, and tourists are fined.

More information:

**CITES team**  
Department of Protected Species and CITES  
Czech Environmental Inspectorate  
Na Brehu 267, 190 00 Prague 9

tel.: 00420 222860308-311  
fax: 00420 222860227  
[cites@cizp.cz](mailto:cites@cizp.cz)  
CZECH REPUBLIC